

AJS

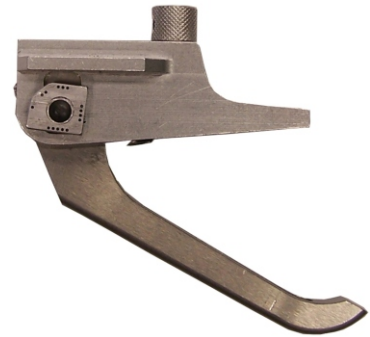
Adjustable Jacket Slitter

Instruction Sheet

Warning! This tool should not be used on live electrical circuits. It is not protected against electrical shock! Always use OSHA/ANSI or other industry approved eye protection when using tools. This tool is not to be used for purposes other than intended. Read carefully and understand instructions before using this tool.

The *Utility Tool* AJS Adjustable Jacket Slitter provides safe longitudinal cuts to soft insulated jacketed cables. The cable is typically a multiple conductor- PE, PVC or EPR sheath protected construction. The AJS tool and blade design will accommodate cutting irregular cable diameters and thicknesses while providing protection to underlying conductors.

Features: Rugged aluminum construction
High grade tool steel blade
Weight: 11 oz.



Operation:

The AJS tool is built with two adjustment features to obtain the most desirable cut. The blade adjustment knob will allow for precise blade depth. The lever cam aids in keeping the tool horizontal and parallel to cables of various sizes and shapes.

Always provide downward tool pressure while slitting the cable. For smaller cables this can be done by holding the cable and tool together. For larger cables, working on the ground may be more convenient. Carefully advance the tool with the serrated lever. If strong resistance is felt, stop and check if blade is obstructed.

After reaching the desired length of cable to be slit, back the tool out straight. Do not twist the tool. Blade damage may occur.

For best performance, keep tool aligned and parallel to cable axis.

AJS Adjustable Jacket Slitter Tool: p/n 43240
CB 276 Replacement Blade: p/n 43265



WARRANTY: The Ripley Company warrants that our line of tools are free of defect and fully operable at the time of shipment. The warranty is limited to the repair or replacement of any product which proves to be defective in material or workmanship, under normal use and service.

